

The Colour Range

The LUKAS CRYL STUDIO assortment consists of a well-balanced spectrum of 62 shades. Available in tubes (75 ml, 125ml), plastic bottles with proportion cap (250ml, 500ml) or buckets (2l, 5l). Please see detailed information about the available sizes in the colour chart.



Titanium White 75ml, 125ml, 250ml, 500ml, 2l, 5l 4608 ☆☆ (7-8) / ■ / 1 PW6	Beige 75ml, 125ml, 250ml, 500ml 4609 ☆☆ (7-8) / ■ / 1 PW6/PY42	Pastel Yellow 75ml, 125ml, 250ml 4621 ☆☆ (6-7) / ■ / 1 PW6/PY74
Lemon Yellow (Primary) 75ml, 125ml, 250ml, 500ml, 2l 4620 ☆☆ (7-8) / ■ / 1 PY3	Cadmium Yellow (hue) 75ml, 125ml, 250ml, 500ml, 2l 4626 ☆☆ (6-7) / ■ / 1 PY74	Flesh Colour 75ml, 125ml, 250ml, 500ml, 2l 4622 ☆☆ (6-7) / ■ / 1 PW6/PY42/PR112
Apricot 75ml, 125ml, 250ml 4623 ☆☆ (6-7) / ■ / 1 PW6/PY74/PR112	Indian Yellow 75ml, 125ml, 250ml, 500ml, 2l 4624 ☆☆ (6-7) / ■ / 1 PY74/PR112	Cadmium Orange (hue) 75ml, 125ml, 250ml, 500ml, 2l 4629 ☆☆ (6-7) / ■ / 1 PY74/PR112
Cadmium Red light (hue) 75ml, 125ml, 250ml, 500ml, 2l 4672 ☆☆ (6-7) / ■ / 1 PY74/PR112	Vermilion 75ml, 125ml, 250ml, 500ml 4686 ☆☆ (6-7) / ■ / 1 PR112	Cadmium Red deep (hue) 75ml, 125ml, 250ml, 500ml, 2l 4674 ☆☆ (6-7) / ■ / 1 PR12/PR122

Carmine 75ml, 125ml, 250ml, 500ml 4661 ☆☆ (6-7) / ■ / 1 PR146	Rose 75ml, 125ml, 250ml 4649 ☆☆ (6-7) / ■ / 1 PW6/PR112/PR122	Magenta Red (Primary) 75ml, 125ml, 250ml, 500ml, 2l 4650 ☆☆ (7-8) / ■ / 1 PR122
Alizarine Crimson 75ml, 125ml, 250ml, 500ml 4666 ☆☆ (6-7) / ■ / 1 PR146/PBk11	Mauve 75ml, 125ml, 250ml, 500ml 4729 ☆☆ (6-7) / ■ / 1 PR146/PV23	Lavender 75ml, 125ml, 250ml 4730 ☆☆ (6-7) / ■ / 1 PW6/PV23
Permanent Violet 75ml, 125ml, 250ml, 500ml, 2l 4732 ☆☆ (7-8) / ■ / 1 PV23	Cyan Blue (Primary) 75ml, 125ml, 250ml, 500ml, 2l 4720 ☆☆ (7-8) / ■ / 1 PW6/PB15:3	Cerulean Blue 75ml, 125ml, 250ml, 500ml, 2l 4721 ☆☆ (7-8) / ■ / 1 PW6/PB15:3/PG7
Cobalt Blue (hue) 75ml, 125ml, 250ml, 500ml, 2l 4725 ☆☆ (7-8) / ■ / 1 PB15:3/PB29	Ultramarine 75ml, 125ml, 250ml, 500ml, 2l 4737 ☆☆ (7-8) / ■ / 1 PB29	Phthalo Blue 75ml, 125ml, 250ml, 500ml 4745 ☆☆ (7-8) / ■ / 1 PB15:1
Prussian Blue 75ml, 125ml, 250ml, 500ml, 2l 4734 ☆☆ (7-8) / ■ / 1 PB15:1/PBk7	Turquoise 75ml, 125ml, 250ml, 500ml, 2l 4724 ☆☆ (7-8) / ■ / 1 PW6/PB15:3/PG7	Arctic 75ml, 125ml, 250ml 4723 ☆☆ (6-7) / ■ / 1 PW6/PY42/PG7/PBk11
Mint 75ml, 125ml, 250ml 4762 ☆☆ (6-7) / ■ / 1 PW6/PG17	Fern 75ml, 125ml, 250ml 4752 ☆☆ (6-7) / ■ / 1 PW6/PY42/PY74/PG7/ PBk11	Chrome Green light 75ml, 125ml, 250ml, 500ml, 2l 4751 ☆☆ (7-8) / ■ / 1 PY3/PG7
Permanent Green light 75ml, 125ml, 250ml, 500ml, 2l 4763 ☆☆ (7-8) / ■ / 1 PY3/PG7	Sap Green 75ml, 125ml, 250ml, 500ml 4765 ☆☆ (6-7) / ■ / 1 PY3/PY83/PG7	Viridian (Phthalo) 75ml, 125ml, 250ml, 500ml, 2l 4754 ☆☆ (7-8) / ■ / 1 PG7

Green Earth 75ml, 125ml, 250ml, 500ml 4758 ☆☆ (6-7) / ■ / 1 PY83/PG7/PBk11	Olive Green 75ml, 125ml, 250ml, 500ml 4757 ☆☆ (7-8) / ■ / 1 PG17	Sand 75ml, 125ml, 250ml 4610 ☆☆ (7-8) / ■ / 1 PW6/PY42/PR101/ PBk11
Naples Yellow 75ml, 125ml, 250ml, 500ml 4634 ☆☆ (7-8) / ■ / 1 PW6/PY3/PY42	Caramel 75ml, 125ml, 250ml 4632 ☆☆ (7-8) / ■ / 1 PY42/PBk11	Yellow Ochre 75ml, 125ml, 250ml, 500ml, 2l 4631 ☆☆ (7-8) / ■ / 1 PY42
Brown Ochre 75ml, 125ml, 250ml, 500ml 4702 ☆☆ (7-8) / ■ / 1 PY42/PR101/PBk11	Raw Sienna 75ml, 125ml, 250ml, 500ml, 2l 4639 ☆☆ (7-8) / ■ / 1 PY42/PR101	Burnt Sienna 75ml, 125ml, 250ml, 500ml, 2l 4709 ☆☆ (7-8) / ■ / 1 PY42/PR101/PBk11
Terracotta 75ml, 125ml, 250ml 4655 ☆☆ (6-7) / ■ / 1 PR101/PR112	Burnt Umber 75ml, 125ml, 250ml, 500ml, 2l 4711 ☆☆ (7-8) / ■ / 1 PR101/PBk11	Raw Umber 75ml, 125ml, 250ml, 500ml 4710 ☆☆ (7-8) / ■ / 1 PY42/PR101/PBk11
Light Grey 75ml, 125ml, 250ml 4785 ☆☆ (6-7) / ■ / 1 PW6/PB15:1/PV23/PBk7	Steel Blue 75ml, 125ml, 250ml 4744 ☆☆ (6-7) / ■ / 1 PW6/PB15:1/PV23/PBk7	Indigo 75ml, 125ml, 250ml, 500ml 4722 ☆☆ (7-8) / ■ / 1 PV23/PB15:1/PBk7
Payne's Grey 75ml, 125ml, 250ml, 500ml 4784 ☆☆ (6-7) / ■ / 1 PR146/PG7/PBk11	Iron Oxide Black 75ml, 125ml, 250ml, 500ml, 2l, 5l 4799 ☆☆ (7-8) / ■ / 1 PBk11	Gold 75ml, 125ml, 250ml, 500ml 4612 ☆☆ (7-8) / ■ / 2 Pearlescent Pigment
Silver 75ml, 125ml, 250ml, 500ml 4613 ☆☆ (7-8) / ■ / 2 Pearlescent Pigment	Copper 75ml, 125ml, 250ml 4614 ☆☆ (7-8) / ■ / 2 Pearlescent Pigment	Gold Bronze 125ml, 250ml 4615 ☆☆ (7-8) / ■ / 3 Pearlescent Pigment

Silver Bronze 125ml, 250ml 4616 ☆☆ (7-8) / ■ / 3 Pearlescent Pigment	Glow in the Dark Hummingbird-Green 75ml, 125ml, 250ml 4607 □ / relative lightfast / 3 Photoluminescent Pigment	Fluorescent Reflex White 75ml, 125ml, 250ml 4601 □ / relative lightfast / 2 Daylight Pigment
Fluorescent Lemon Yellow 75ml, 125ml, 250ml 4602 □ / relative lightfast / 2 Daylight Pigment	Fluorescent Signal Red 75ml, 125ml, 250ml 4603 □ / relative lightfast / 2 Daylight Pigment	Fluorescent Magenta 75ml, 125ml, 250ml 4604 □ / relative lightfast / 2 Daylight Pigment
Fluorescent Green 75ml, 125ml, 250ml 4605 □ / relative lightfast / 2 Daylight Pigment	Fluorescent Blue 75ml, 125ml, 250ml 4606 □ / relative lightfast / 2 Daylight Pigment	

Signs and Symbols:

Colour, Filling Size, Art. No., Lightfastness, Opacity, Price Group, Pigment Name

Lightfastness: ☆☆☆ = excellent up to outstanding lightfast (7-8 on the blue wool scale)
☆☆ = very good to excellent lightfast (6-7 on the blue wool scale)

Opacity: □ = transparent ▣ = semi-transparent
■ = semi-opaque ■ = opaque

Price Group: Pigment prices are very different. This can be particularly noticed in high-pigmented artists' colours. Therefore we have to offer the LUKAS CRYL Studio range in different price groups.

Pigment Name: The two preceding letters determine the type of colourant used (P=Pigment) and the dye (e.g. W=White), followed by the digits of the pigment type.

This colour chart is produced within the limitations of printing and is intended as a guide only.

LUKAS Lukas-Nerchau GmbH
Harffstr. 40 · 40591 Düsseldorf · Germany
Phone: +49 (0)211-7813-0
www.lukas.eu

Your retailer:

WERB 2056 © Stand 01/2016

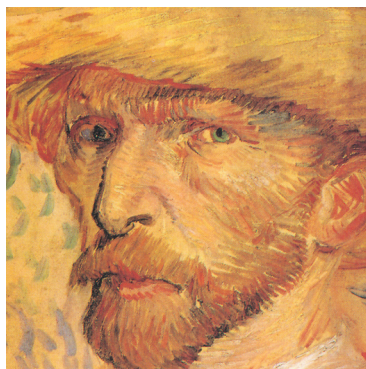


LUKAS
CRYL STUDIO

Fine Artists' Acrylic Colour
The Professional All-Round Colour

Introduction

Since 1862, the brand LUKAS has been a sign of top quality artist's colours. Even Vincent van Gogh, as can be proved, has used the products of our house - the well known master ordered the popular colour extra from Düsseldorf.



Up to the current day numerous artists all over the world trust the over 150-year-old tradition of our house. We also do not breach this trust in the modern area of acrylic painting, in which the company LUKAS has a pioneer roll. As one of the first manufacturers of artists's colours on the European continent, in 1964 LUKAS offered an acrylic colour to satisfy the demand from artists for a modern, water-mixable, quick drying artist colour: **LUKA^oCRYL**.

The **LUKAS CRYL STUDIO** fine artists' acrylic colour offers the beginners and the user of large quantities a **remarkable low price**, but still **high quality** alternative. This acrylic colour was developed after the newest knowledge of the pigment and binding agent researches. Only high quality artists' pigments in a high-elastic acrylate are used.

Characteristics

Good covering power is ensured through a high concentration of valuable pigments, significantly higher than typical economic colours.

Pigments used guarantee **excellent levels of lightfastness**. No colour has a lower light fastness than 6-7 on the internationally standardised 8-step wool scale (Exception are the Fluorescent and Glow in the Dark colour, technical conditioned).

The exclusive use of high quality acrylates as a binder guarantees **an excellent absorption** on a great variety of surfaces such as cardboard, canvas, plastics, glass, as well as high elasticity and tensile strength. This enables a work in thick layers without the risk of cracking.

The colour has a medium consistency to allow the most variable application, from an easy, extensive colour application up to a slight structure.

The average drying time is 20 minutes with a brush stroke thickness of 100 µm.

LUKAS CRYL STUDIO can be mixed with all LUKAS acrylic colour assortments (LUKAS CRYL pastos, LUKAS CRYL liquid, LUKAS CRYL TERZIA, LUKAS Illu-Color) and with the LUKAS painting mediums for acrylic colours.

One of the greatest advantages of these colours is the remarkably low price compared to the paints intensity and covering power, particularly when being used in large volume.

Mediums

Acrylic Retarder: Slows down the drying of the acrylic colour and allows a longer wet-in-wet painting. There are in 2 versions: liquid (Art.-No.: 2262) and gel-like (Art.-No.: 2236). In order to roughly double the drying time, a max. addition of 10% of the "liquid" and max. 50% of the "gel-like" mediums are recommended. Pretest necessary as colours become more transparent by addition.

By mixing with **Crystal Gel** (art. no 2267) or **Transparent Acrylic Gel** (Art.-No.: 2261) the acrylic colour achieves more transparency and brilliance, whilst increasing the structure of the colour. It can be applied either mixed into the colour or as a glaze.

Through the use of LUKAS STUDIO Modeling Pastes relief-like structures can be created. You can either dye it with colour before the application or you can over paint it.



The use of LUKAS Spray Films, Varnishes and Laquers will give the surface the desired effect (gloss, silk brilliant or matt) and these products protect the paintings from dirt and other negative environmental influences.

Detailed Informations about mediums can be found in our leaflet LUKAS Acrylic Painting Mediums.

Processing Instruction

LUKAS CRYL STUDIO should never be exposed to frost and should not be used by temperatures under 15°C as otherwise the colour has no stable colour-film and the risk of cracking may arise.

Every acrylic binder is an acrylic resin dispersion which appears milky in wet state. After drying the colours brighten up and the brilliance will be intensified.

Due to the quick drying process, all painting tools such as brushes, palettes, etc should be cleaned with water immediately after use. Once the colour is dry, it can not be removed. This is especially important for stains on garments, carpets, furniture, etc.

Equipment

Colours: Initially we recommend the following colour shades: Titanium White, Lemon Yellow, Magenta Red, Cyan Blue, Yellow Ochre light and Iron Oxide Black.

Brushes: Brushes are important tools for the artists. They influence the artist's technique. A good quality brush is of great importance. For a painting with a regular thick colour application we suggest using a bristle brush. This will result in clearly visible brush strokes.

For beginners, we recommend LUKAS Studio bristle brush (Art.-No.: 5483) and LUKAS Red-Taklon brush (Art.-No.: 5441). Both brushes are available in different sizes. Where colour and glazes are applied more thinly, a thicker haired brush is necessary. Initially, we recommend the round LUKAS Red-Taklon brush (Art.-No.: 5454).



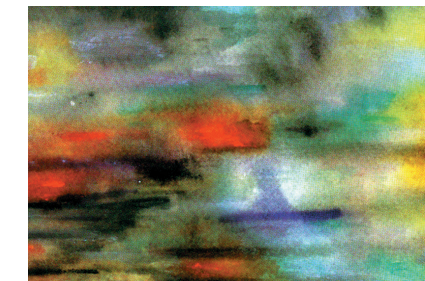
Painting Surfaces: Easy and safe to use are all ready prepared LUKAS surfaces, for example acrylic pads. They are ready to paint, no preparation is required.

Painting Accessories: These comprise palettes and palette dippers for mixing of colours or adding of mediums. For acrylic painting, plastic or paper palettes are particularly useful.



Easels: Acrylic paintings are usually painted upright. Therefore an easel is needed as a support. For the beginner we recommend either the LUKAS sketching-easel (Art.-No.: 5590C) or the LUKAS academy-easel (Art.-No.: 5591C).

Painting Techniques



Application in a water-colour type: such as in the wet-in-wet technique, as well as in the classic water-colour technique on dry paper. The colour has to be diluted with plenty of water.



Application in a normal covering type: in the style of Gouache or Tempera painting in which covering colour surfaces are set side by side. Lightening of the colours by addition of White.



Application with structures in an oil-painting type: by using LUKAS Structure Pastes. More or less strong structures can be worked out on the surface, up to relief structures.